



E-NEWS FROM TILE HERITAGE

June  2006



Here's What's Below:

Tile-fest a Great Success

Tiles of the Northern Plains: Preview of Exhibitions

Accommodations in Duluth and Minneapolis

Picture Tile Search

New Book: Decorative British Tiles

“Conservation” on Mosaics

Coming next: Conference registration forms!



Moravian Pottery and Tile Works built by Henry Chapman Mercer in 1912, now a working historical museum.

Tile-fest a Great Success

The **Moravian Pottery and Tile Works** in Doylestown, Pennsylvania held its **8th annual Tile Festival** under the “Big Tops” the third weekend in May. The 2-day event was hosted by curator **Vance Koehler**, who this year arranged for pleasantly warm and sunny weather. There were 53 vendors, more than ever before, and some came from as far away as Baton Rouge, Detroit, Leesburg, Ohio, two from Ontario, and ourselves from California. Oh yes, people flocked in on Saturday like there was no tomorrow, many with their wallets and purses bursting



Kathy McCann and Gwen Strachan show off tiles from the Pewabic Pottery in Detroit.
Photo by Charles Yeske.

at the seams. Most of the tile makers had smiles on their faces by mid-afternoon. Sunday was a bit slower in the morning, but by mid-afternoon a late hour buying frenzy kept us plenty busy. The **Tile Heritage table** always attracts special attention because of the great variety of styles and designs on display. The tiles we have for sale are all donated by tile artists and artisans from throughout North America to help support our educational programs. We love it when, invariably each year, someone will look up and ask, “Did YOU make all these??” **Special thanks to all who donated tiles!**



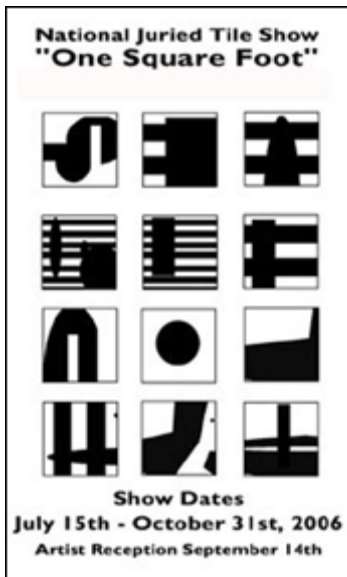
The Tile Heritage table represents the tile work of artists from throughout North America.



Garry Vann Ausdle creates historic reproductions, Images in Clay, in his studio in Charlottesville, Virginia.
Photo by Charles Yeske.

Another Opportunity to Donate Tiles!

The success of the sale in Doylestown means that we are once again asking for tile donations. We have a **silent auction** planned for Minneapolis as well as the **Tile Festival** at the **American Swedish Institute** on September 16th. We already have heard from a handful of artists wanting to know where to send tiles; so if you were intending to send a tile or two but forgot, here is another opportunity! You may use the same form you received in the mail, but don't send tiles to Vance! Mark the box "THF" and mail to: Josh Blanc, Clay Squared to Infinity, 34 13th Ave NE, Minneapolis, MN 55418. Don't forget to **affix your business card** to the backside of the tiles and then **please sign and date your tiles with a Sharpie**. Thanks very much!



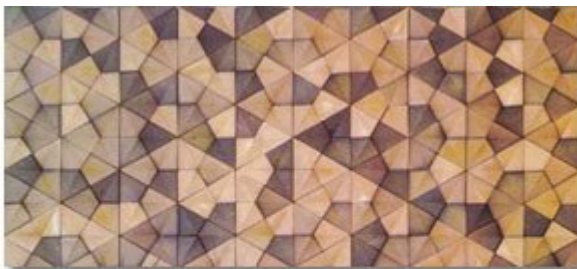
"Tiles of the Northern Plains" September 13-17, 2006 Preview of Exhibitions

Let's look at the exhibitions that are being planned for Duluth and Minneapolis.

The Infinity Gallery at Clay Squared to Infinity, 34 13th Avenue NE in Minneapolis is presenting "One Square Foot," a national juried tile show from July 15th through October 31st. The exhibition will present a broad range of artists' interpretations of tile as a contemporary art form. All mediums were welcomed. Juror: **Jason Busch**. Artists' reception is scheduled for the **evening of Sept. 14th** when the awards and prizes will be announced.



"Ungrouted: Ceramic Artists Explore the Tile" is being presented by the **Duluth Art Institute, Depot**, 506 West Michigan Street. Exhibitions Director, **David Hodges**, explains "In 'Ungrouted' we take the tile off the bathroom floor and hang it on the gallery wall to essay this square of fired clay as a piece of fine art. It is easy to see why a tile is such a perfect contrivance for the expression of



Wall tile by Bill Goodman, head of ceramics at Grand Rapids Community College, Grand Rapids, Michigan.
Courtesy Duluth Art Institute.

artistic ideas. It serves as a sort of blank canvas on the one hand and a multi-dimensional space on the other." Among the artists involved will be **Karin Kraemer, Dave Lynas, Laura McCaul** and **Bill Goodman**. The exhibition will open July 20th, closing on October 29th.



The Depot, home of the Duluth Art Institute.

“**Tiles of the North,**” a contemporary ceramic tile exhibit featuring local artists and members of the Handmade Tile Association, will be hosted by **Karin Kraemer** at **Duluth Pottery**, 916 Hammond in Superior, Wisconsin, opening Sept. 4th. Together with Red Mug Espresso next door and other artists in the building, Duluth Pottery assisted in forming the North End Art Council, a creative hub for the arts in the area with classes, art shows, concerts, poetry readings and a community garden. “**Tiles of the North**” will move to the Ripple River Gallery in Aitkin, Minnesota in mid-October.



Karin Kraemer demonstrates how to make a (very) high relief, three-dimensional "tile."



Pat Joyelle's "Orchids."
Courtesy Blue Iris Gallery

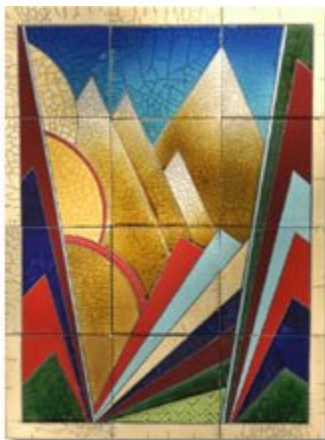
The **Blue Iris Gallery** in Duluth will offer “**Contemporary Women Tilemakers: Clay and Glass**” Sept. 4 to Oct. 7. The exhibit will feature the work of **Pat Joyelle, Penny Clark, Deb LeAir, Mary Jo Schmith, Shane Upthegrove and Moira Sweeney**. The gallery is located at 723 Lake Avenue South. Visit www.blueirisgalleryduluthmn.com.

Step back in time at the award winning **Fairlawn Mansion**, one of America’s Castles. The 42-room Victorian home was built in 1889 by Superior’s three-time mayor, **Martin Pattison**. Fairlawn recalls the elegance and prosperity of Superior’s early boomtown days as well as the mansion’s unique 42 years as a children’s home. “**Orphans,**” opening Sept. 11 and running through the 17th, will be a historical exhibition of area tile, terra cotta and stoves from local buildings that are gone. Histories, stories and period photos will accompany the objects. Location: 906 East 2nd Street, Superior, Wisconsin. Following the conference the exhibition will move to the Tweed Museum of Art at the University of Minnesota, Duluth.



Architectural terra cotta from Park Point Elementary School, one of many "Orphans" on display at the Fairlawn Mansion.

mayor, **Martin Pattison**. Fairlawn recalls the elegance and prosperity of Superior’s early boomtown days as well as the mansion’s unique 42 years as a children’s home. “**Orphans,**” opening Sept. 11 and running through the 17th, will be a historical exhibition of area tile, terra cotta and stoves from local buildings that are gone. Histories, stories and period photos will accompany the objects. Location: 906 East 2nd Street, Superior, Wisconsin. Following the conference the exhibition will move to the Tweed Museum of Art at the University of Minnesota, Duluth.



"Pandora's Box," raku created by Richard Gruchalla and Carrin Rosetti.
Courtesy Sivertson Gallery.

The **Gallery** at 361 Canal Park Drive in Duluth will present a show titled “**Building on Tradition: Contemporary Handmade Tiles**” Sept. 13 to Oct. 1 highlighting the work of regional artists who create unique contemporary tiles in addition to other sculptural ceramic forms. The exhibit will be a gathering of both artistic styles in order to show the versatility and inspiration of the artists. Participants include **Martye Allen, Richard Gruchalla and Carrin Rosetti, Ken and Pat Larson, John Onkka, and Marty Pearson**.



"Dreaming of a Peaceful Shore," a stoneware tile by Marty Pearson. Courtesy Sivertson Gallery.

morning culminating at **Glensheen** that evening. The next day we will visit additional sites that will end in the afternoon in time for people to drive themselves back to Minneapolis for the reception at **Clay Squared to Infinity** on Thursday evening.



Hampton Inn on Lake Superior in Duluth.

For those planning to participate in the program in **Duluth** we have reserved a bloc of rooms at the **Hampton Inn of Canal Park** for both Tuesday and Wednesday nights, Sept. 12th and 13th. Rooms facing Lake Superior are \$109 per night; those facing the city, \$89 per night (includes a complimentary breakfast and free parking). For reservations call **218 720-3000** before **August 12th** and say that you are with the

Tile Heritage Foundation.

If you plan to attend one or more workshops in **Minneapolis** (see May's "E-News") participate in Friday's program at the **Minneapolis Institute of Arts** and Saturday's Tile Festival at the **American Swedish Institute**, you'll want to book a room at the **Holiday Inn Metrodome**. or wish to **Call 800 448-DOME**. A special rate of \$107 has been arranged for the Tile Heritage Foundation. **Reservations must be made by August 23rd to guarantee this rate.** Parking will be an additional \$10.50 per day if charged to your room. The hotel is located east of I-35W, just north of the I-94 freeway. If flying into Minneapolis, there is now a **Light Rail** (less than \$3 each way) from the airport to downtown. The Holiday Inn picks up at either the Cedar Riverside station or the Metrodome station. Call the hotel for a ride once you reach the station.

Registration forms for the conference will be available in our next report plus a list of tour sites in Duluth and the roster of speakers in Minneapolis.

Duluth & Minneapolis Accommodations

A 2-1/2 hour drive separates Duluth and Minneapolis. We are anticipating that because the first half of the conference is in Duluth (except for those attending workshops) and the second half is in Minneapolis that most people will choose to fly into Minneapolis if coming from out of state. At this point we have no plans to hire a bus to carry people from Minneapolis to Duluth; we assume attendees will team up with friends, rent a car, and drive. We have also scheduled most of the **workshops in Minneapolis** to end early enough on Wednesday, Sept. 13th, for people to drive to **Glensheen** in time for the reception, dinner and lecture that evening.

In Duluth there will be **bus tours of historic and contemporary tile sites and exhibitions** beginning first thing Wednesday



Low Art Tiles on one of many tiled stoves you will see on tour in Duluth.



Holiday Inn Metrodome with downtown Minneapolis in the background. Courtesy InterContinental Hotels Group.

Picture Tile Search is on!

Sandie Fowler and **Wendy Harvey**, antique art tile dealers and authors of **Art Nouveau Tiles**, are writing another book, this one on picture tiles that first gained popularity in England in the 1880s. There were numerous series produced, like Cinderella, Red Riding Hood, Aesop's fables, etc., each consisting of 12 different scenes. Among the tile manufacturers were Minton Hollins, Minton China Works, Maw & Co., Copeland's, and Wedgwood. The current challenge is to find examples of all the tiles in each series.

If you're a tile collector with any of these tiles or if you have access to an installation of picture tiles in your own home or a friend's, please contact Sandie at artiles@earthlink.net. She doesn't need the tile, just a high quality, digital photo. The list of what's still needed for the book is constantly changing. For a current list of what's missing email Sandie. She will reply with the list.



"Where the Carcase is, There will the Eagles be gathered together." Wedgwood picture tile. Courtesy Sandie Fowler.



New Book: Decorative British Tiles

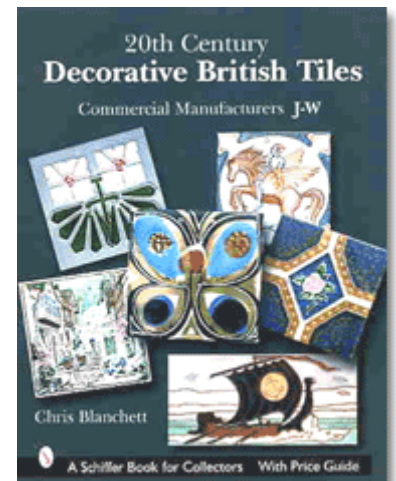
Tile historian, author and collector, **Chris Blanchett**, has written a colorful and informative treatise on 20th century tiles in Great Britain, a 3-volume set that's sure to be a pictorial delight, filled with proper historical detail. Just the covers of the books alone are scrumptiously inviting! Titled *20th Century Decorative British Tiles*, the book consists of two volumes covering the commercial manufacturers in alphabetical order and a third volume that focuses exclusively on craft and studio tile makers, an area in which little has been published. Yes, there'll be an index. And what's more, price guides will accompany each book!

The book is being published by Schiffer and is due by the end of June. Each volume is \$69.95.

For a limited time we would like to offer our members the set at a discounted price as we

did with Norman Karlson's Encyclopedia of American Art Tiles. The base price is \$209.85 to which your discount applies. Add to this 7.75% sales tax if you're a California resident and an additional \$10 to cover shipping/handling.

Member discounts are as follows: 5% for those who contribute up to \$100 a year in membership; 10% for our Centurian (\$100) members; 15% for members who contribute more than \$100 a year in membership; and 20% for our publishing sponsors. **The best way is to fax us an order (fax 707 431-8455)** with a credit card (don't email your card number please). We will take care of the rest.





This is a **one-time opportunity** while we await delivery of the books. Place your order now to be part of our initial order. Once the books are available and posted on our website the price will reflect full retail. **So act now.** We know you have plenty of choices as to where to buy this book, but we know too that there are those of you who prefer to support Tile Heritage rather than the huge international book vendors. **This is the time, and please accept our thanks in advance!**

“Conservation” on Mosaics

The current newsletter, *Conservation* vol. 21, no. 1, published by **The Getty Conservation Institute** has a special focus on mosaics. Featured are the following articles: “Mosaic Conservation: Fifty Years of Modern Practice”; “A Need for Strategy: A Discussion about Conserving Mosaics in the Arab World”; “Assessing the Protective Function of Shelters over Mosaics”; and “Lessons Learned: A Report on the 2005 International Committee for the Conservation of Mosaics (ICCM) Conference” in Tunisia.

The Getty Conservation Institute (GCI) works internationally to advance the field of conservation through scientific research, field projects, education and training, and the dissemination of information in various media. In its programs, the GCI focuses on the creation and delivery of knowledge that will benefit the professionals and organizations responsible for the conservation of the visual arts.



Conservation, The Getty Conservation Institute Newsletter, is distributed free of charge three times a year, to professionals in conservation and related fields, and to members of the public concerned about conservation. Back issues of the newsletter, as well as additional information regarding the activities of the GCI, can be found in the Conservation section of the Getty’s website: www.getty.edu.

Don’t forget to save the dates: Sept. 13-17! We want to see you in MN!